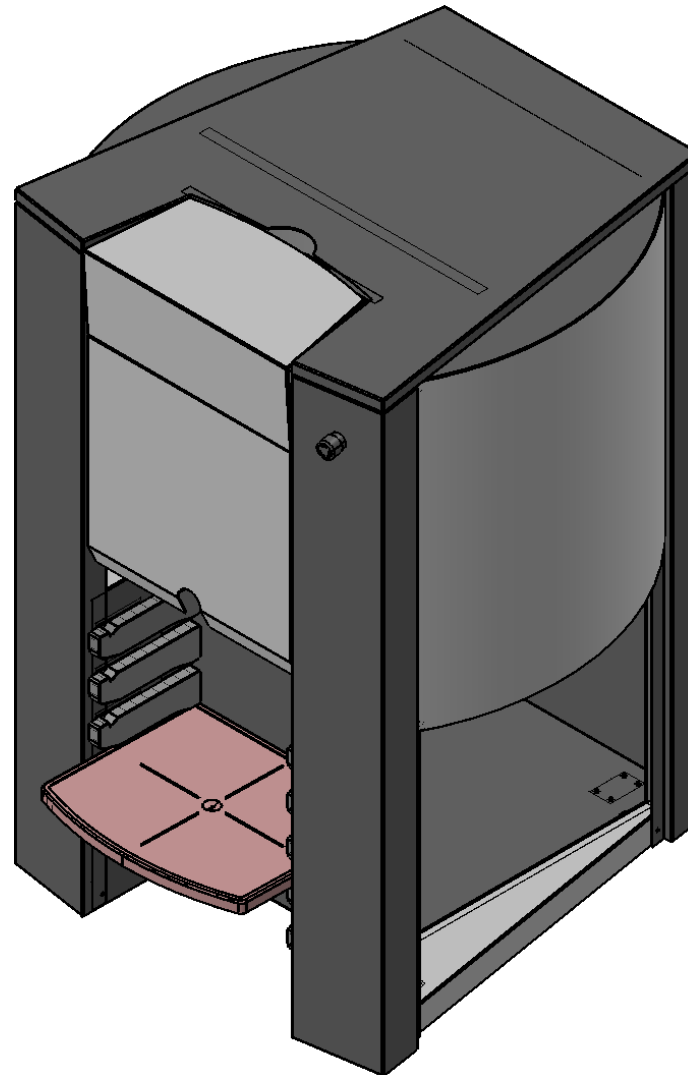




X-SMART PRO SPARE LIST



Fluid Management[®]

www.fluidman.com



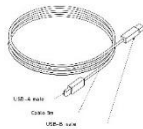
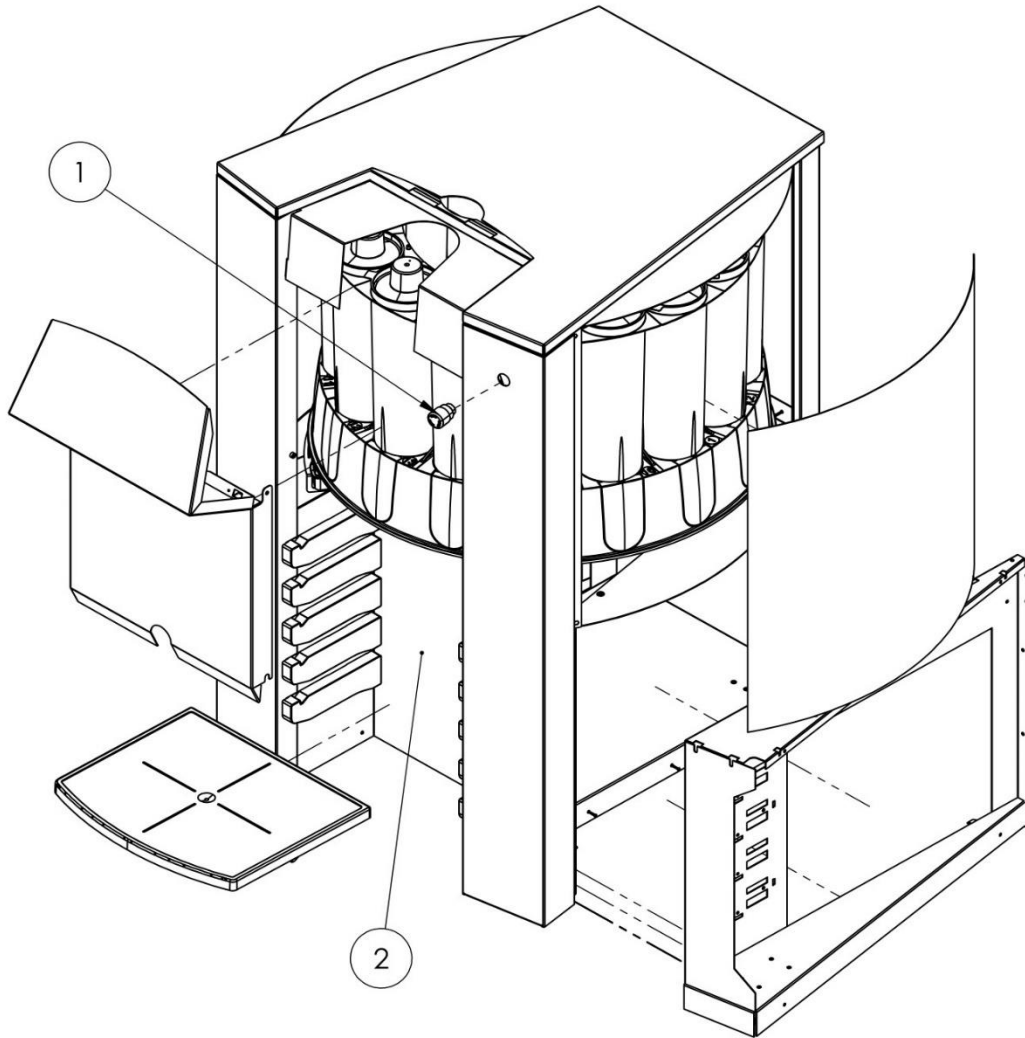
THE TINTING COMPANY

www.fast-fluid.com

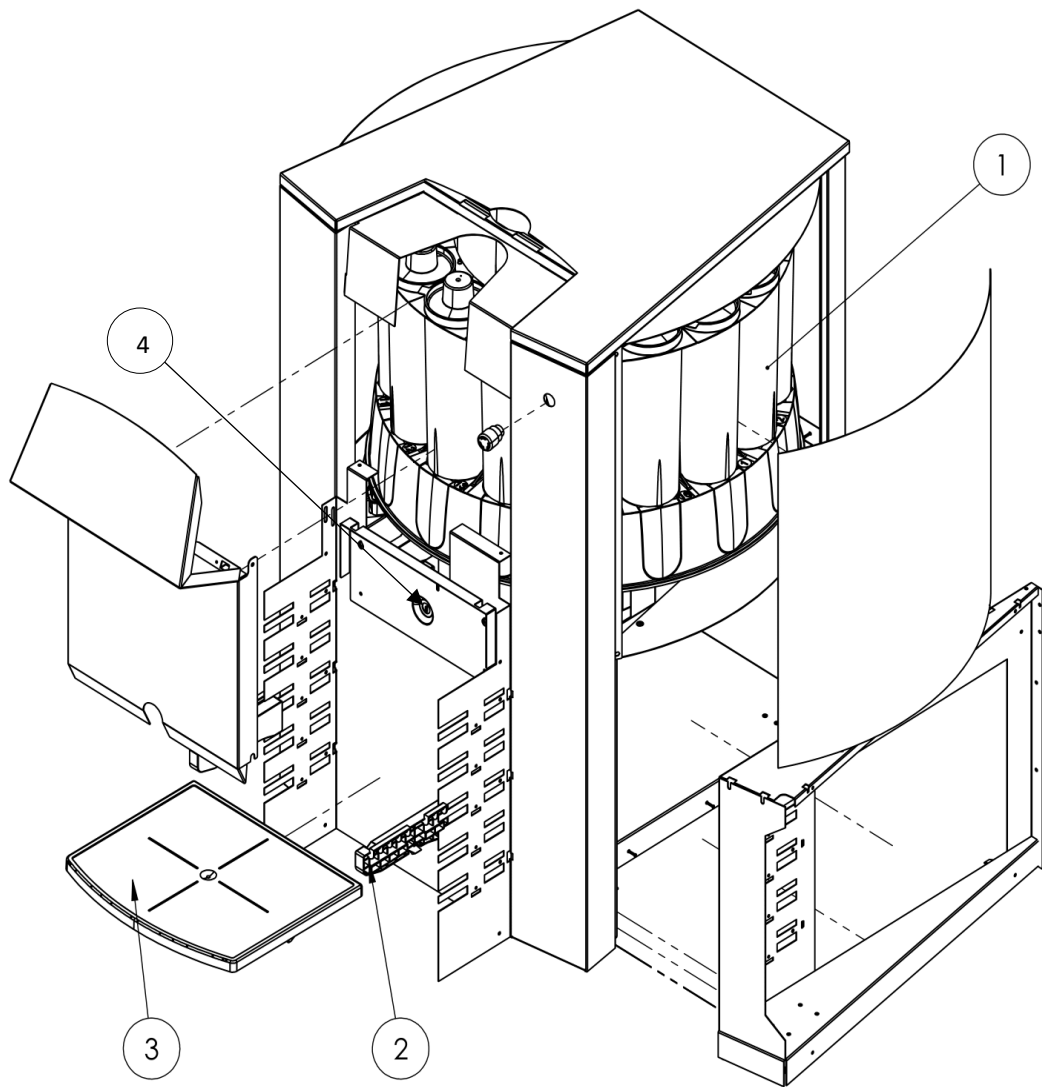
INDEX

X-SMART PRO

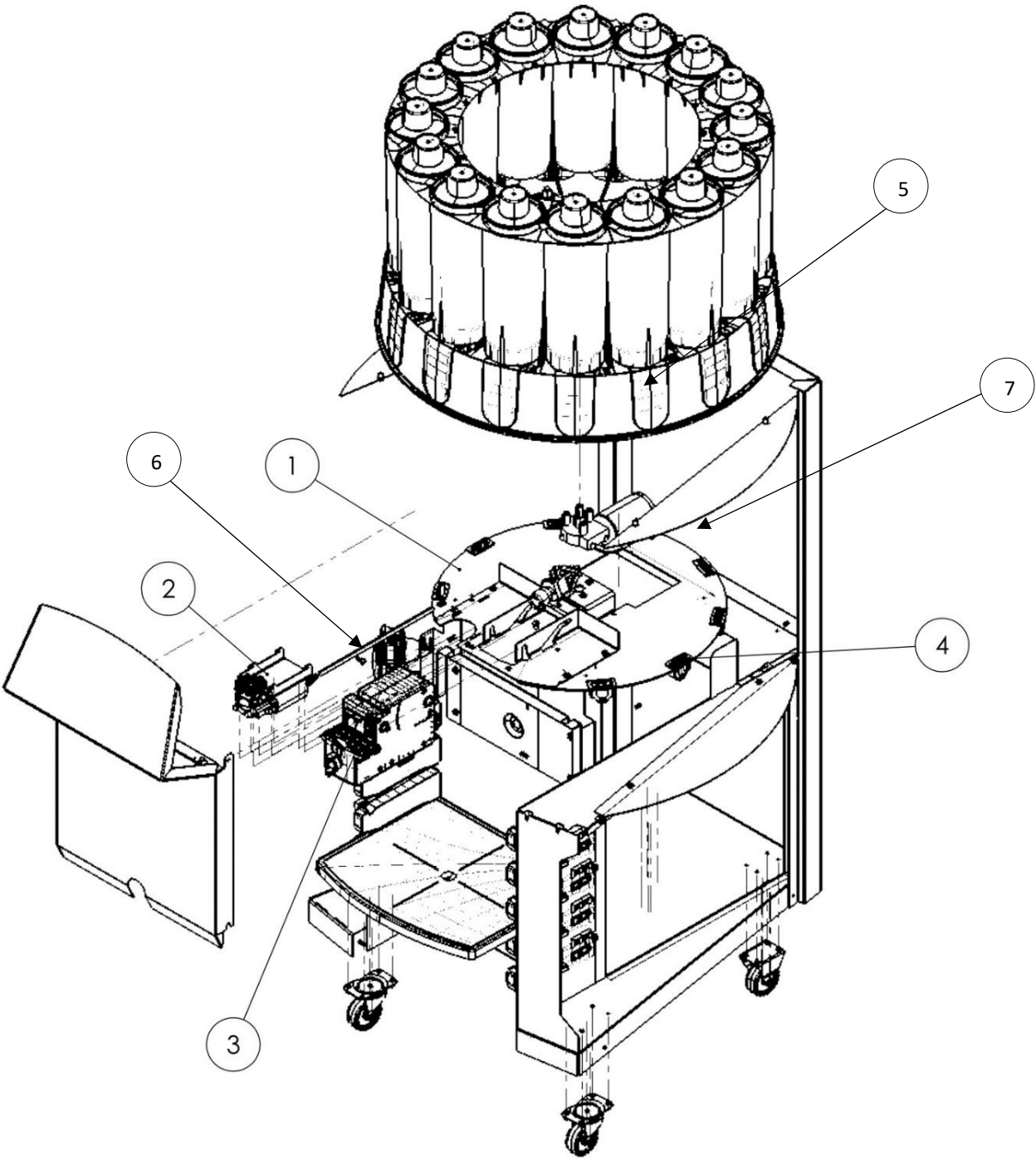
Main frame parts.....	3201
Dispense bay parts.....	3202
Turntable	3203
Canister 2.3L.....	3204
Pump	3205
Canister & Pump 2.3L.....	3206
MDU X-Smart Pro	3208
Brush unit	3209



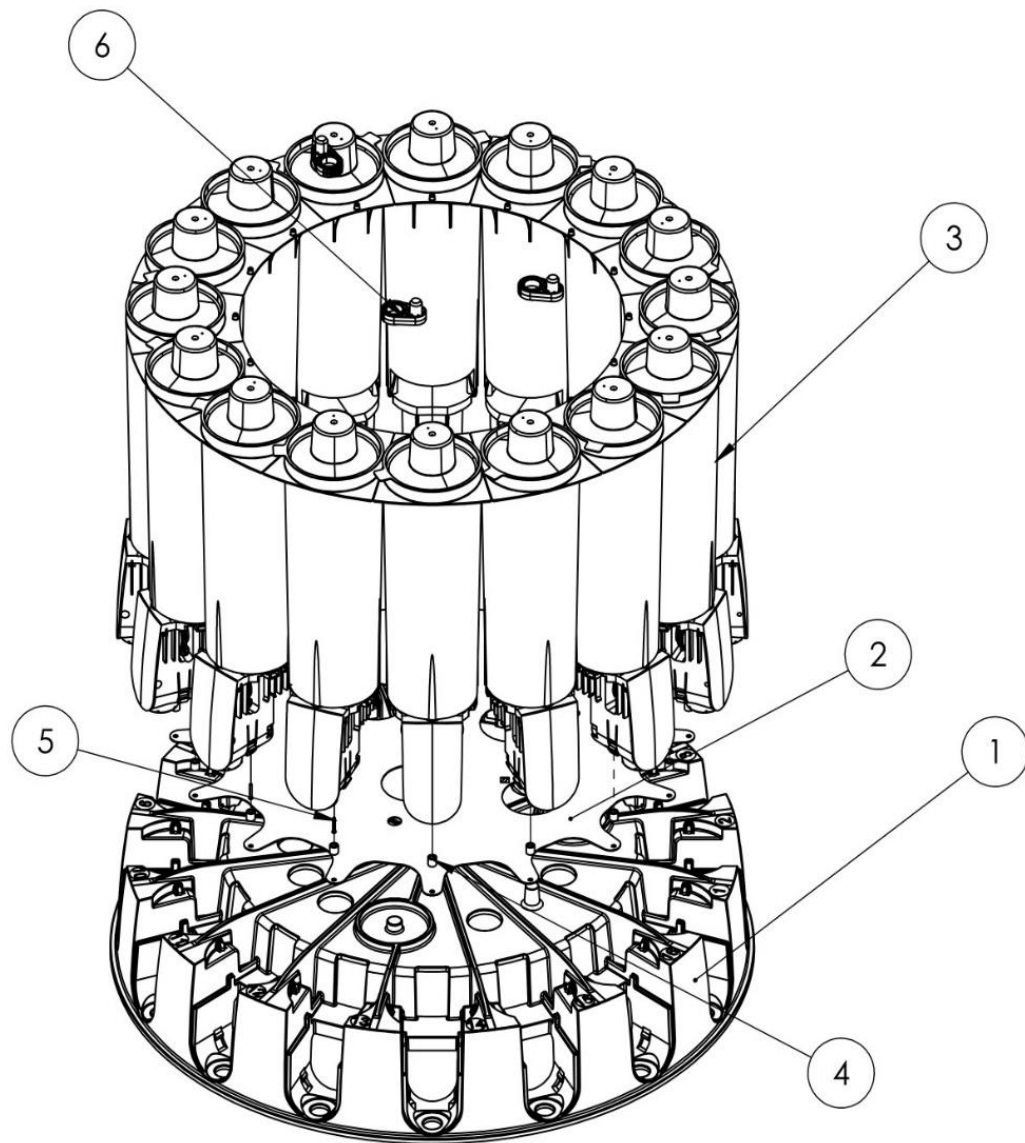
PART LIST			
ITEM	PART #	DESCRIPTION	REMARK
1	1864937-SP	EM SWITCH COMPLETE	PAGE 3210
2		DISPENSE BAY PARTS	PAGE 3202
3	1817218-SP	USB COMMUNICATION CABLE	



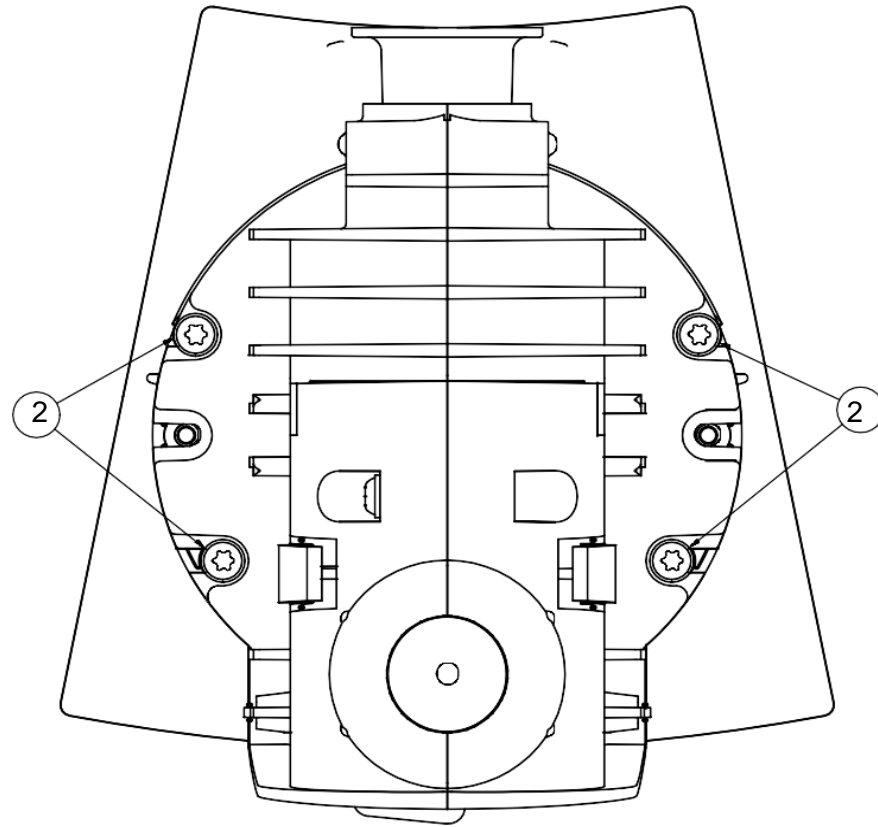
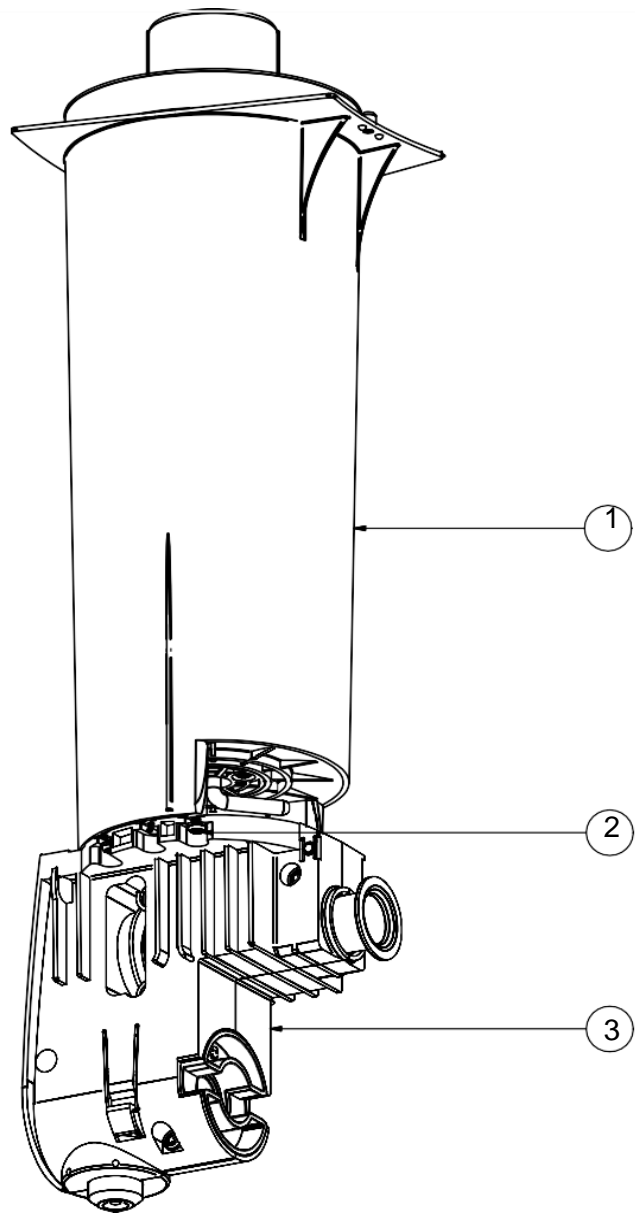
PART LIST			
ITEM	PART #	DESCRIPTION	REMARK
1		FRAME PARTS	PAGE 3201
2	1819224-SP	SHELF HOLDER LEFT & RIGHT (SET 1PC)	
3	1819000-SP	CAN TABLE X-SMART PRO	
4	1818952-SP	CAN SENSOR Y	



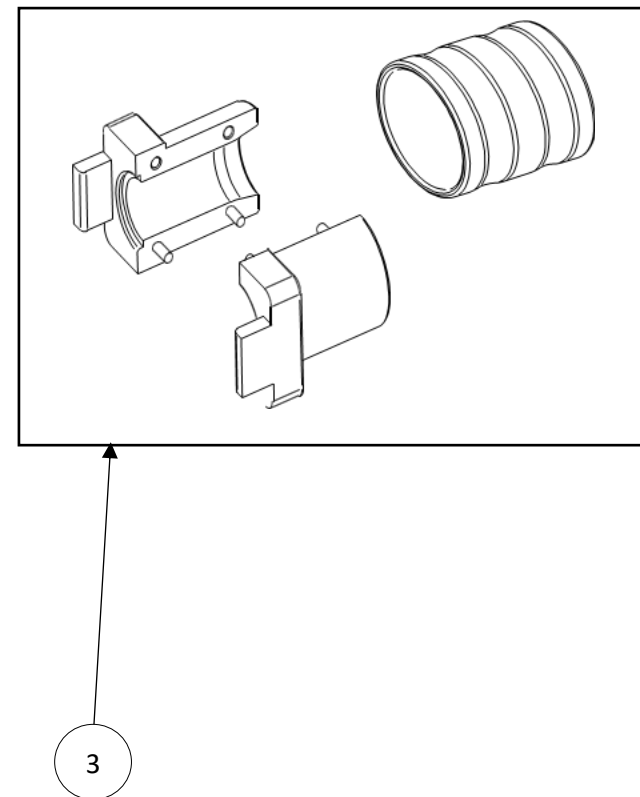
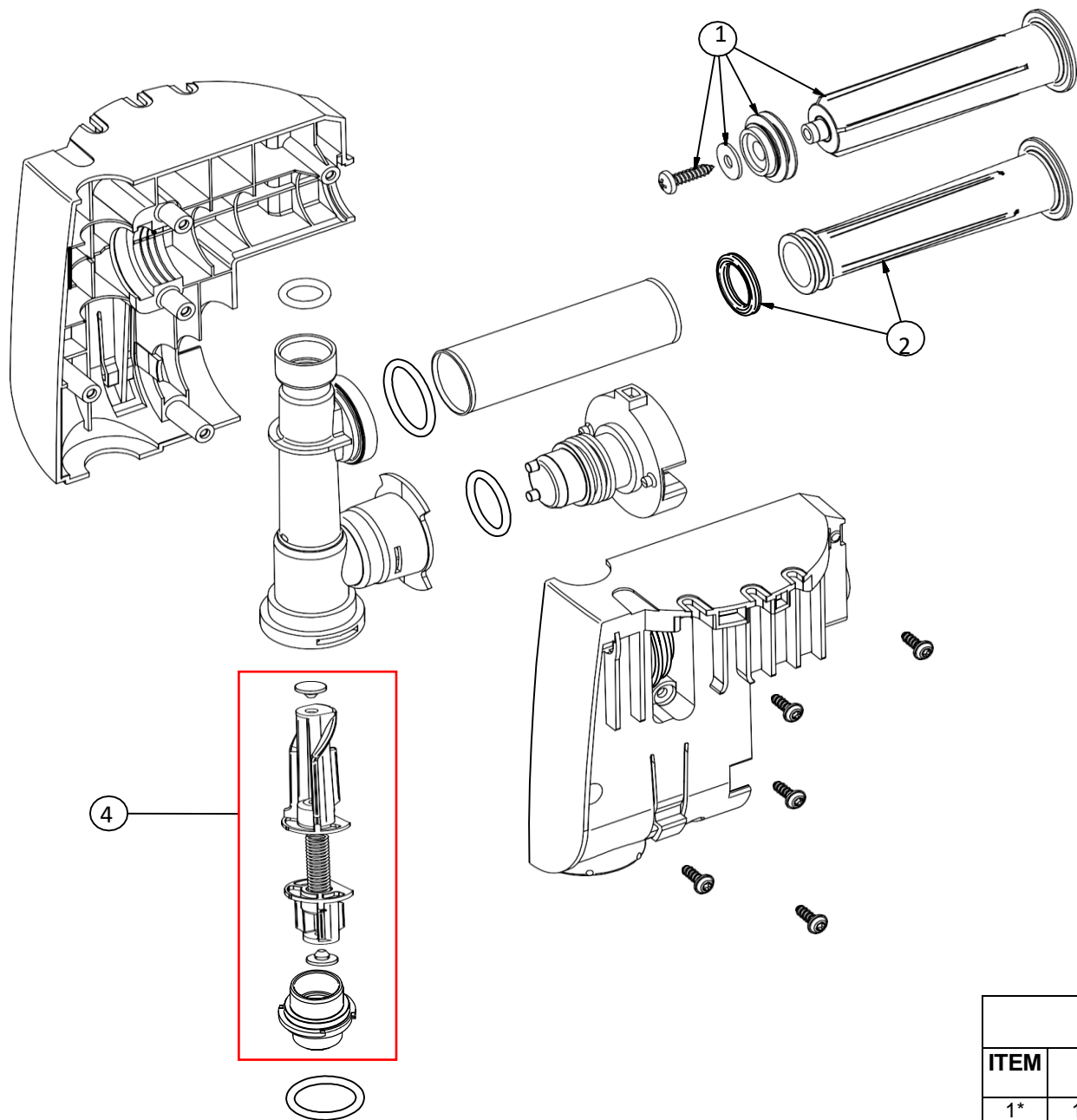
PART LIST			
ITEM	PART #	DESCRIPTION	REMARK
1	100404-SP	PLATE BSE PRO	
2	1819225-SP	TURNTABLE MOTOR, COMP. (SET 1PC)	PAGE 3203
3	1819222-SP	MDU X-Smart Pro	PAGE 3208
4	1819762-SP	WHEEL CUP	
5		TURNTABLE	
6		BRUSH UNIT	PAGE 3209
7		MAIN FRAME	PAGE 3200



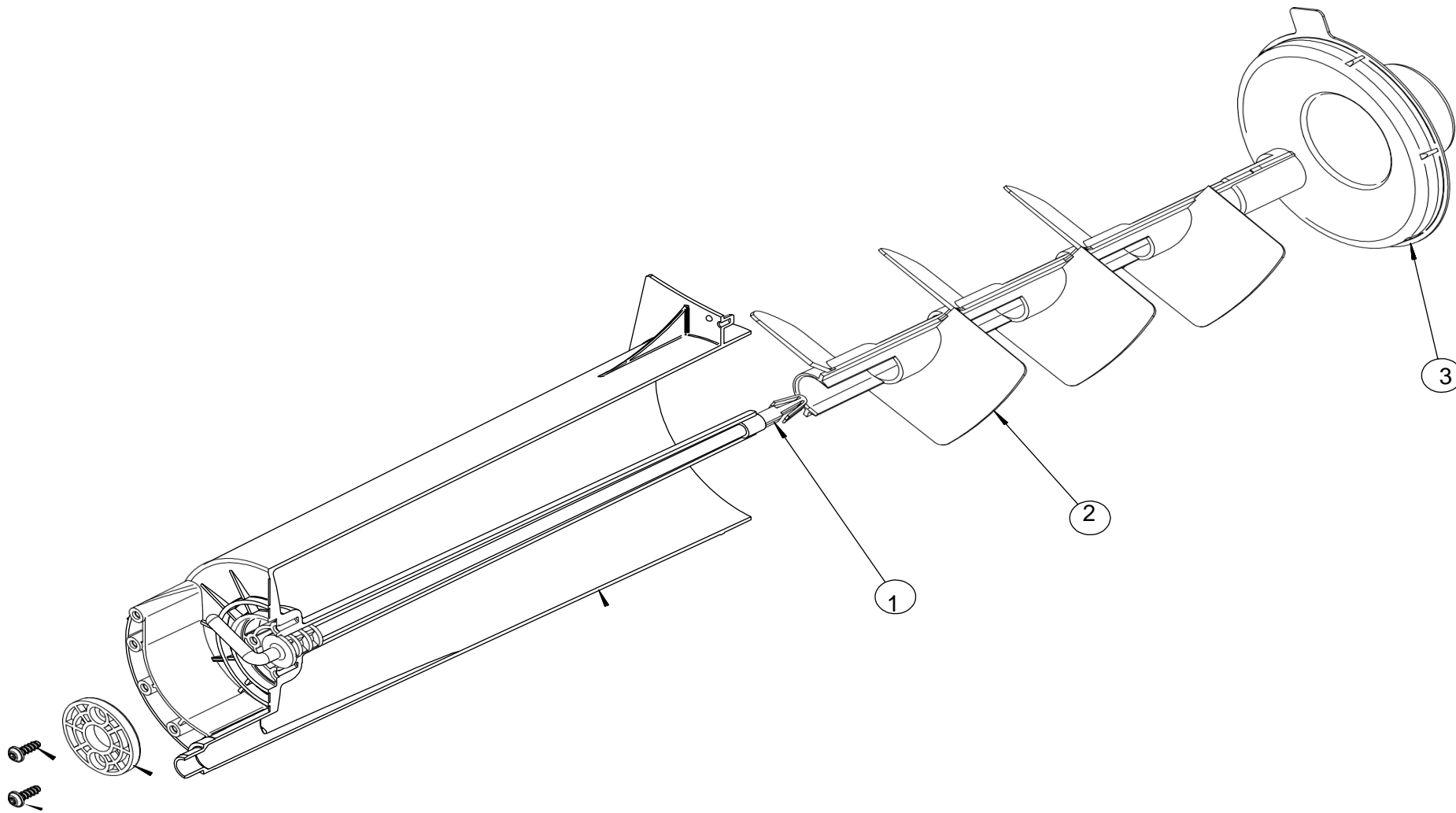
PART LIST			
ITEM	PART #	DESCRIPTION	REMARK
1	1817586	TURNTABLE ASEMBLY	
2	1819278	PLATE, AGITATION,16, X-SMART	
3		CANISTER ASSEMBLY	
4	1210222	SPACER, Ø5.2XØ10X10	
5	1862344	RIVET,5X16, ST-ST, PAN, STD	
6	1816579	ROEREI	



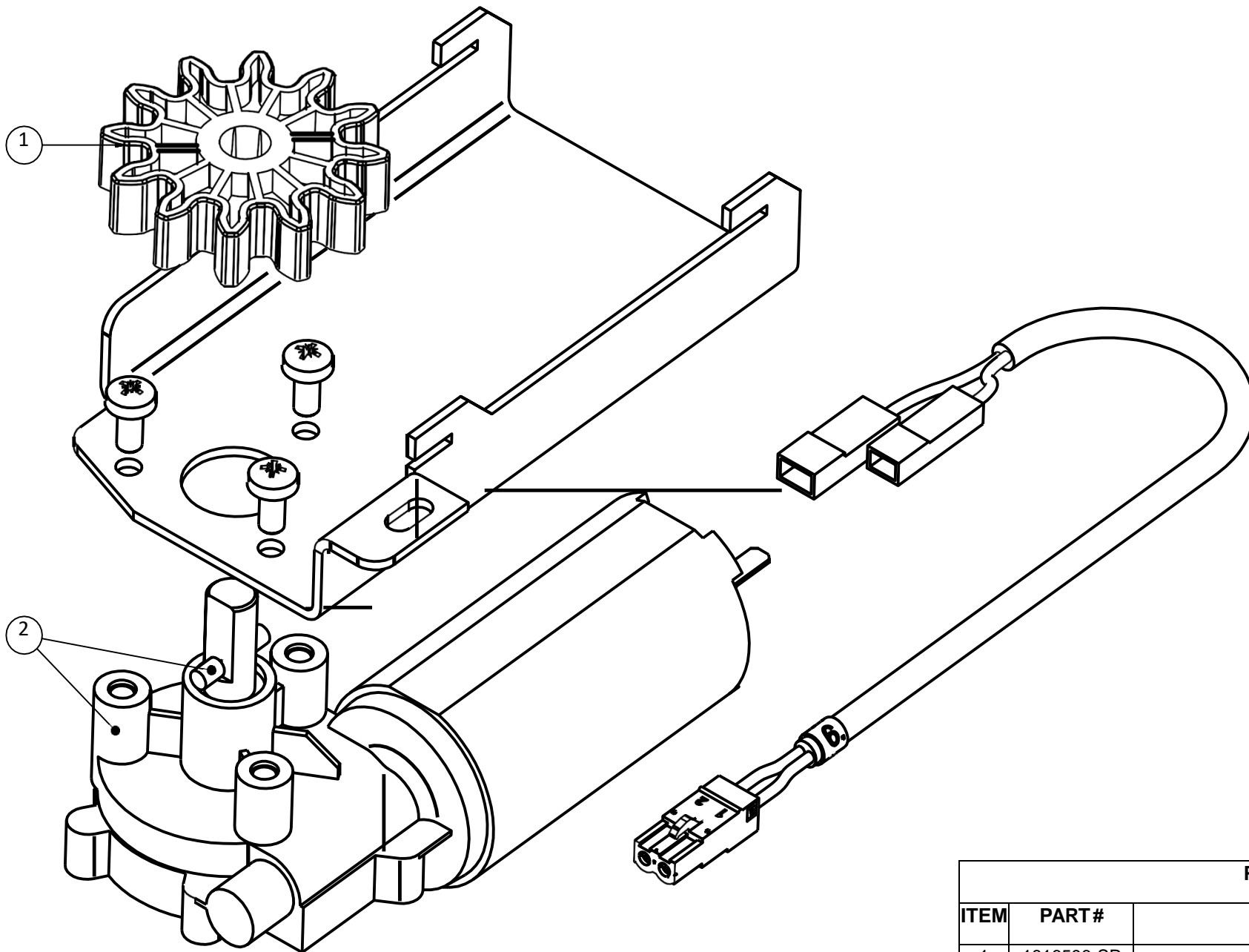
PART LIST			
ITEM	PART #	DESCRIPTION	REMARK
1		CANISTER ASSEMBLY, 2.3L	
2		PUMP, ASSEMBLY	



PARTS LIST			
ITEM	PART#	DESCRIPTION	REMARK
1*	1817697-SP	PISTONROD + PTFE PISTON	
2*	1817286-SP	PISTONROD + QUAD RING	
3	1865003-SP	PISTON REPLACEMENT TOOL	
4*	1865747-SP	PUMP PLUNGER, SET 50 PCS	

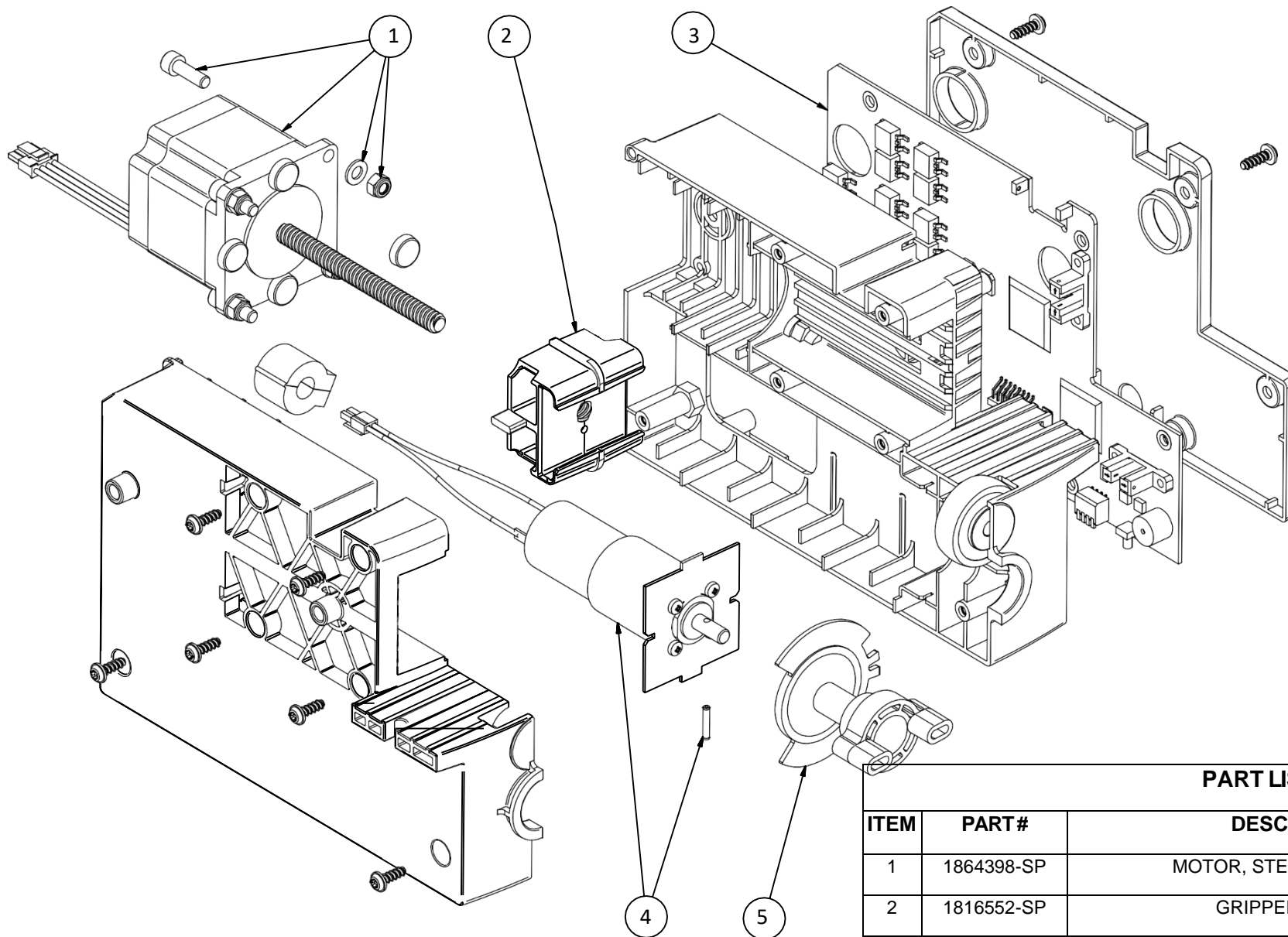


PART LIST			
ITEM	PART #	DESCRIPTION	REMARK
1	1816506-SP	ROD, AGTITATION	
2	1816507-SP	STIRRER	
3	1816581-SP	LID, CANISTER,2.3L	



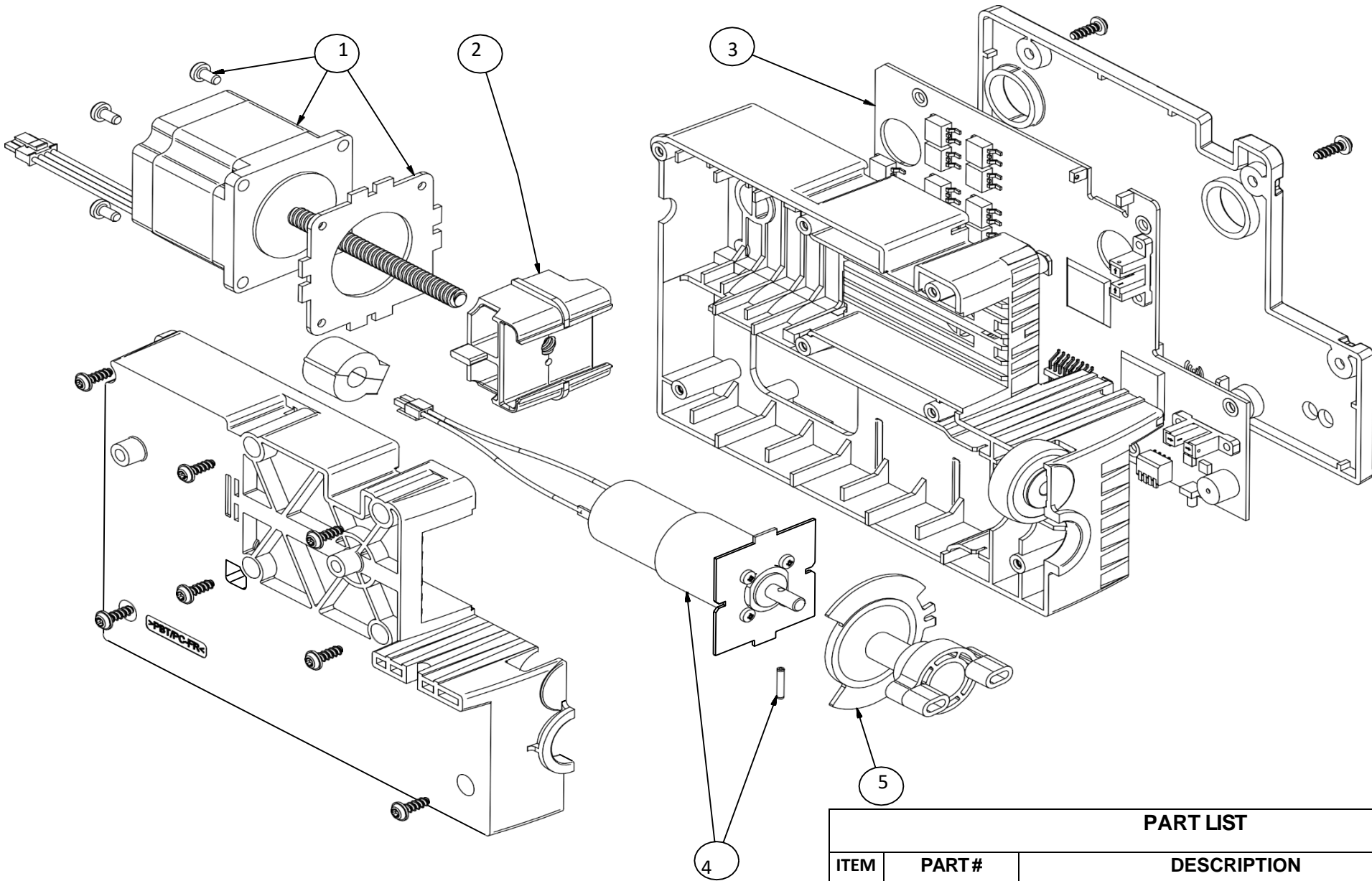
PART LIST

ITEM	PART #	DESCRIPTION	REMARK
1	1816596-SP	PINION, M4X12	
2	1864807-SP	MOTOR, TURNTABLE, X-SMART	

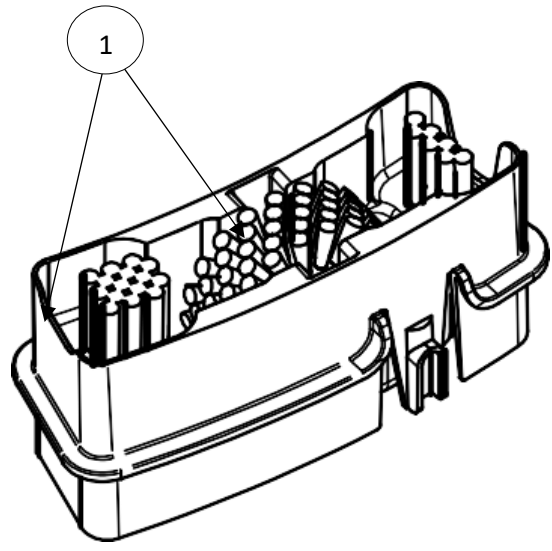
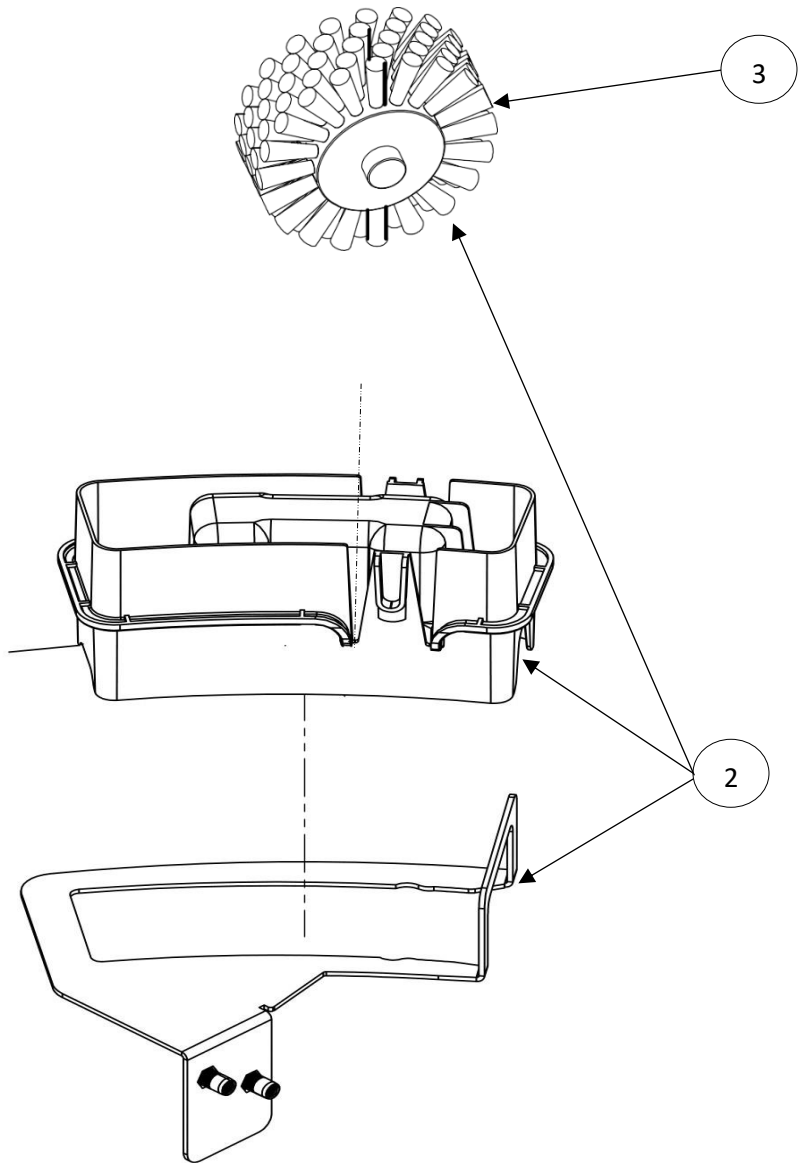


PART LIST

ITEM	PART#	DESCRIPTION	REMARK
1	1864398-SP	MOTOR, STEPPER&SPINDLE	
2	1816552-SP	GRIPPER, XSMART	
3	1816541-SP	SMARTBOARD	
4	1817109-SP	MOTOR, VALVE,24VDC,20RPM	
5	1816593-SP	VALVE ACTUATOR, X-SMART	



PART LIST			
ITEM	PART #	DESCRIPTION	REMARK
1	1864398-SP	MOTOR, STEPPER&SPINDLE	
2	1816552-SP	GRIPPER, XSMART	
3	1816541-SP	SMARTBOARD	
4	1817109-SP	MOTOR, VALVE,24VDC,20RPM	
5	1816593-SP	VALVE ACTUATOR, X-SMART	



Replacement for static brush

PART LIST			
ITEM	PART #	DESCRIPTION	REMARK
1	1817512-SP	ROTARY BRUSH	
2*	1817518-SP	ROTARY BRUSH INCL BRACKETS	
3	1817385-SP	BRUSH-SMART	