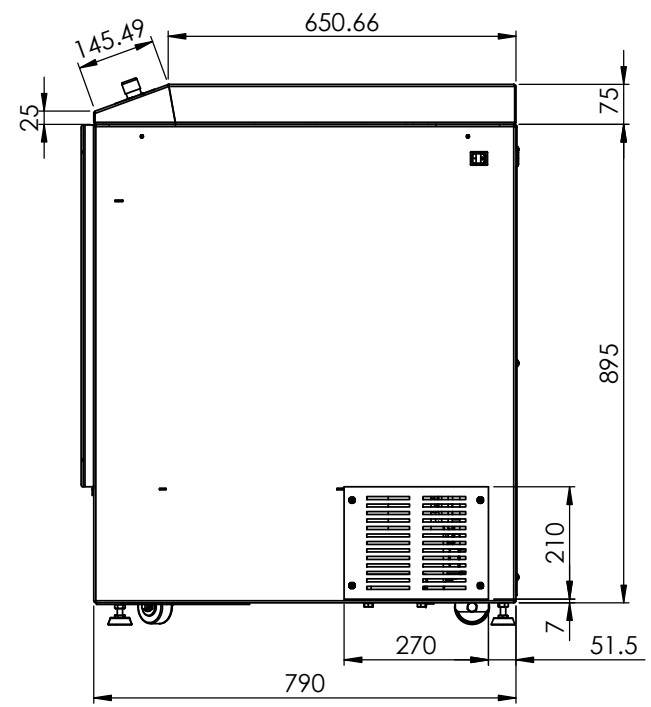
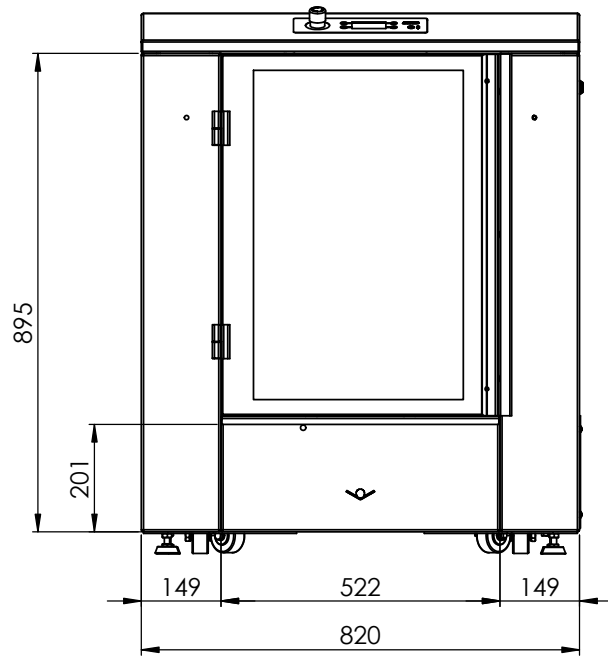
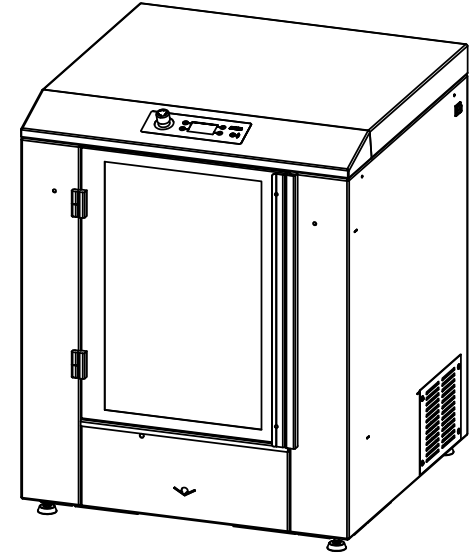
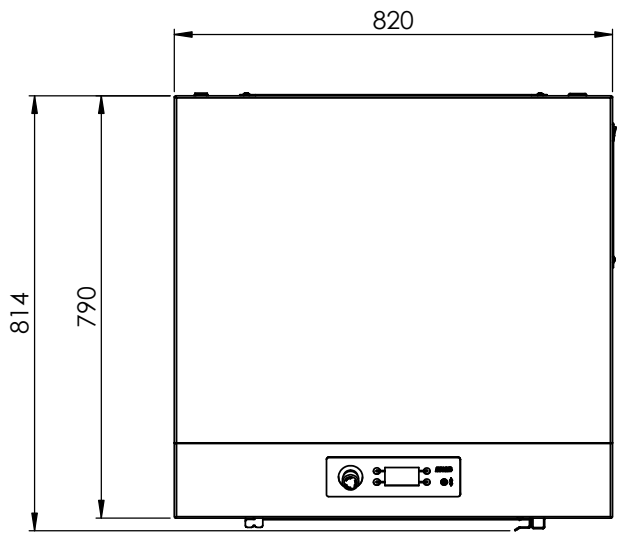




Rev.	Description	Revision by	Revision date



Drawn by	BPeeters	Drawing according to ISO 1101, ISO 406, NEN 3634		Din. ISO 2768-M, unless specified otherwise		ISO-5457	
Material	See Bill Of Materials	Unit	mm	Linear dimensions		A3	
Colour		Dims		2000-4000	+2		
Remark		Date	23-11-2015	1000-2000	+1.2	Angular dimensions	
				400-1000	+0.8		
				120-400	+0.5	10-50	±1°
				30-120	+0.3	50-120	±0°20'
				6-30	+0.2	120-400	±0°10'
				3-6	+0.1	400-∞	±0°5'
				0.5-3	+0.1	Tolerances	
				Scale		1:20	
 <small>THE TINTING COMPANY</small> NETHERLANDS		<small>THE NETHERLANDS P.O. Box 220 - 2170 AE Sassenheim Tel. +31(0)252 240 800 www.fast-fluid.com</small> CONFIDENTIAL PROPRIETARY MATERIAL. All design, reproduction, manufacturing, use & sales rights of items shown here on or of articles fabricated therefrom are expressly reserved by FAST & FLUID® 2015.				Item Number	
Assembly Part number		Description		Item Number			
		GA480 Dimensions					